

# StecoGuide drill sleeves in SMOP

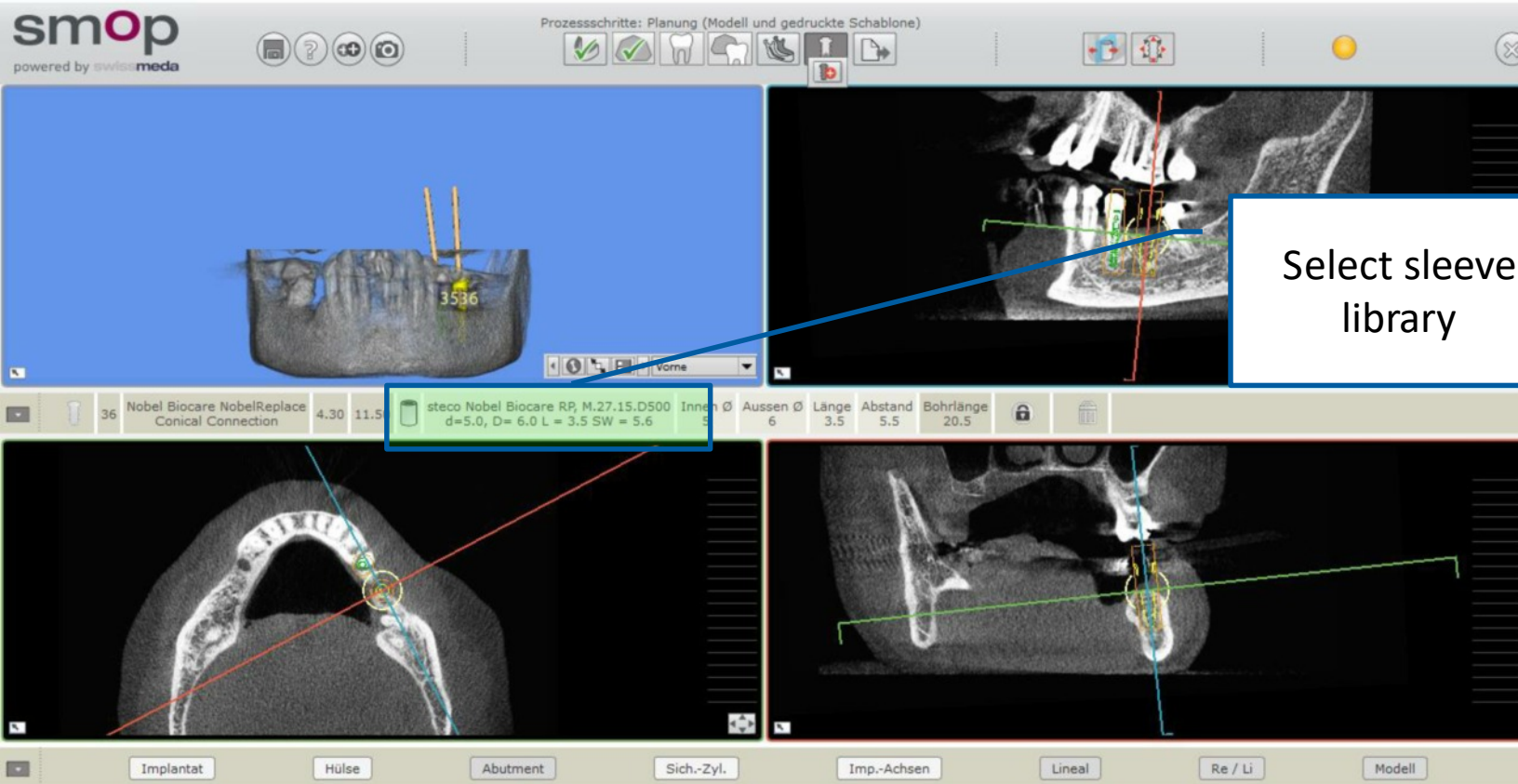


smop  
powered by swissmeda

## Selection StecoGuide drill sleeves

1. Select implantat
2. Select sleeve library **Steco**
3. Select sleeve type
  - single**
  - outer (double sleeve principle)**
  - inner (without outer sleeve)**
  - guide sleeve (for surgical kit)\***

\* StecoGuide guide sleeves are available for selected surgical kits



## Selection StecoGuide sleeve library

Prozessschritte: Planung (Modell und gedruckte Schablone)

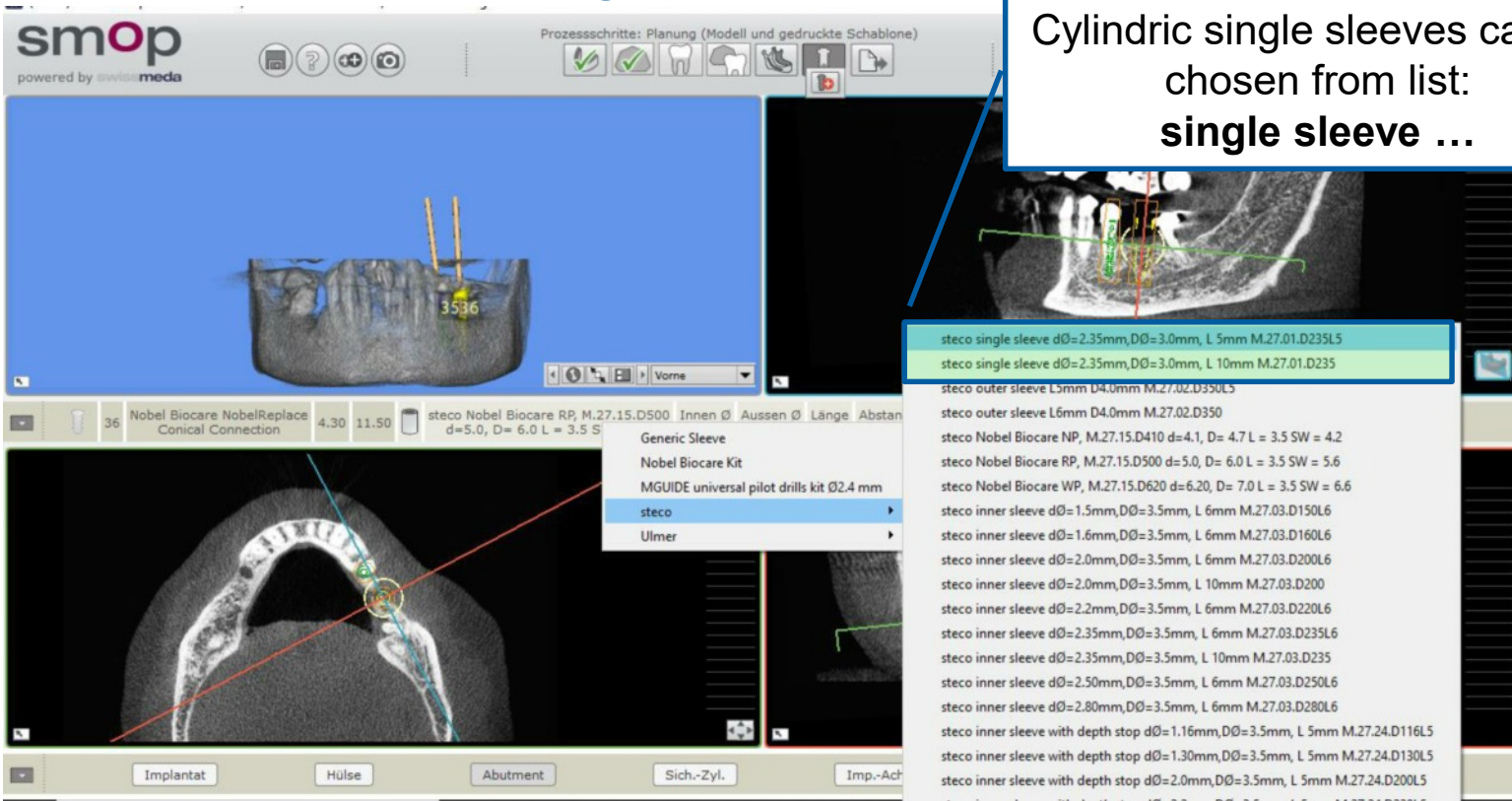
steco Nobel Biocare RP, M.27.15.D500 Innen Ø Aussen Ø Länge Abstand  
d=5.0, D= 6.0 L = 3.5 S

- Generic Sleeve
- Nobel Biocare Kit
- MGUIDE universal pilot drills kit Ø2.4 mm
- steco
- Ulmer

steco single sleeve dØ=2.35mm, DØ=3.0mm, L 5mm M.27.01.D235L5  
 steco single sleeve dØ=2.35mm, DØ=3.0mm, L 10mm M.27.01.D235  
 steco outer sleeve L5mm, F=10mm M.27.02.D350L5  
 steco outer sleeve L6mm, D4.0mm M.27.02.D350  
 steco Nobel Biocare NP, M.27.15.D410 d=4.1, D= 4.7 L = 3.5 SW = 4.2  
 steco Nobel Biocare RP, M.27.15.D500 d=5.0, D= 6.0 L = 3.5 SW = 5.6  
 steco Nobel Biocare WP, M.27.15.D620 d=6.20, D= 7.0 L = 3.5 SW = 6.6  
 steco inner sleeve dØ=1.5mm, DØ=3.5mm, L 6mm M.27.03.D150L6  
 steco inner sleeve dØ=1.6mm, DØ=3.5mm, L 6mm M.27.03.D160L6  
 steco inner sleeve dØ=2.0mm, DØ=3.5mm, L 6mm M.27.03.D200L6  
 steco inner sleeve dØ=2.0mm, DØ=3.5mm, L 10mm M.27.03.D200  
 steco inner sleeve dØ=2.2mm, DØ=3.5mm, L 6mm M.27.03.D220L6  
 steco inner sleeve dØ=2.35mm, DØ=3.5mm, L 6mm M.27.03.D235L6  
 steco inner sleeve dØ=2.35mm, DØ=3.5mm, L 10mm M.27.03.D235  
 steco inner sleeve dØ=2.50mm, DØ=3.5mm, L 6mm M.27.03.D250L6  
 steco inner sleeve dØ=2.80mm, DØ=3.5mm, L 6mm M.27.03.D280L6  
 steco inner sleeve with depth stop dØ=1.16mm, DØ=3.5mm, L 5mm M.27.24.D116L5  
 steco inner sleeve with depth stop dØ=1.30mm, DØ=3.5mm, L 5mm M.27.24.D130L5  
 steco inner sleeve with depth stop dØ=2.0mm, DØ=3.5mm, L 5mm M.27.24.D200L5

Select Steco sleeve library

## Selection StecoGuide single sleeves



Prozessschritte: Planung (Modell und gedruckte Schablone)

steco single sleeve dØ=2.35mm,DØ=3.0mm, L 5mm M.27.01.D235L5

steco single sleeve dØ=2.35mm,DØ=3.0mm, L 10mm M.27.01.D235

steco outer sleeve L3mm D4.0mm M.27.02.D350L5

steco outer sleeve L6mm D4.0mm M.27.02.D350

steco Nobel Biocare NP, M.27.15.D410 d=4.1, D= 4.7 L = 3.5 SW = 4.2

steco Nobel Biocare RP, M.27.15.D500 d=5.0, D= 6.0 L = 3.5 SW = 5.6

steco Nobel Biocare WP, M.27.15.D620 d=6.20, D= 7.0 L = 3.5 SW = 6.6

steco inner sleeve dØ=1.5mm,DØ=3.5mm, L 6mm M.27.03.D150L6

steco inner sleeve dØ=1.6mm,DØ=3.5mm, L 6mm M.27.03.D160L6

steco inner sleeve dØ=2.0mm,DØ=3.5mm, L 6mm M.27.03.D200L6

steco inner sleeve dØ=2.0mm,DØ=3.5mm, L 10mm M.27.03.D200L6

steco inner sleeve dØ=2.2mm,DØ=3.5mm, L 6mm M.27.03.D220L6

steco inner sleeve dØ=2.35mm,DØ=3.5mm, L 6mm M.27.03.D235L6

steco inner sleeve dØ=2.35mm,DØ=3.5mm, L 10mm M.27.03.D235L6

steco inner sleeve dØ=2.50mm,DØ=3.5mm, L 6mm M.27.03.D250L6

steco inner sleeve dØ=2.80mm,DØ=3.5mm, L 6mm M.27.03.D280L6

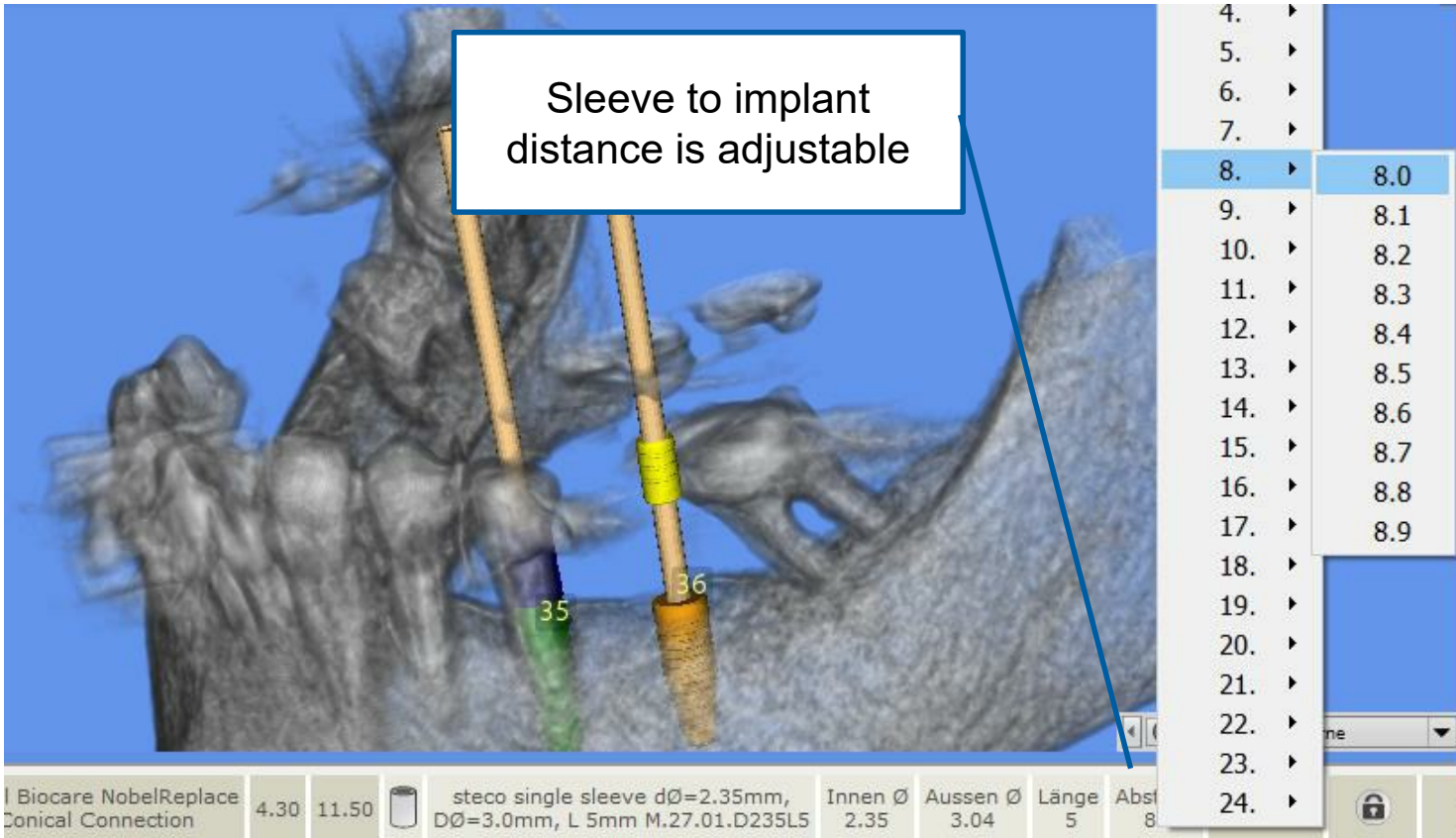
steco inner sleeve with depth stop dØ=1.16mm,DØ=3.5mm, L 5mm M.27.24.D116L5

steco inner sleeve with depth stop dØ=1.30mm,DØ=3.5mm, L 5mm M.27.24.D130L5

steco inner sleeve with depth stop dØ=2.0mm,DØ=3.5mm, L 5mm M.27.24.D200L5


Cylindric single sleeves can be chosen from list:  
**single sleeve ...**





Sleeve to implant distance is adjustable

4.	▶
5.	▶
6.	▶
7.	▶
8.	▶ 8.0
9.	▶ 8.1
10.	▶ 8.2
11.	▶ 8.3
12.	▶ 8.4
13.	▶ 8.5
14.	▶ 8.6
15.	▶ 8.7
16.	▶ 8.8
17.	▶ 8.9
18.	▶
19.	▶
20.	▶
21.	▶
22.	▶
23.	▶
24.	▶

Biocare NobelReplace Conical Connection	4.30	11.50		steco single sleeve dØ=2.35mm, DØ=3.0mm, L 5mm M.27.01.D235L5	Innen Ø 2.35	Aussen Ø 3.04	Länge 5	Abst 8
--	------	-------	---	--	-----------------	------------------	------------	-----------

## Principle StecoGuide **double sleeves**

Plan position of outer sleeve in SMOP and fix it in the surgical template.

Different sizes of inner sleeves fit to the outer sleeve and are changed during surgery acc. to the diameter of the surgical instrument.

Choose this type to guide several diameters in one template



## Principle StecoGuide **double sleeves**

Plan position of outer sleeve in SMOP and fix it in the surgical template.

Different sizes of inner sleeves fit to the outer sleeve and are changed during surgery acc. to the diameter of the surgical instrument





## Selection StecoGuide outer sleeves (tube in tube)

The screenshot shows the smop software interface. On the left, there is a 3D model of a dental arch with two implants. On the right, there is a CT scan of the same arch with a green box highlighting the area of interest. A list of StecoGuide outer sleeves is displayed in the center, with the following items:


- steco single sleeve dØ=2.35mm,DØ=3.0mm, L 5mm M.27.01.D235L5
- steco single sleeve dØ=2.35mm,DØ=3.0mm, L 10mm M.27.01.F235
- steco outer sleeve L5mm D4.0mm M.27.02.D350L5
- steco outer sleeve L6mm D4.0mm M.27.02.D350**
- steco Nobel Biocare NP, M.27.15.D410 d=4.1, D= 4.7 L = 3.5 SW = 4.2
- steco Nobel Biocare RP, M.27.15.D500 d=5.0, D= 6.0 L = 3.5 SW = 5.6
- steco Nobel Biocare WP, M.27.15.D620 d=6.20, D= 7.0 L = 3.5 SW = 6.6
- steco inner sleeve dØ=1.5mm,DØ=3.5mm, L 6mm M.27.03.D150L6
- steco inner sleeve dØ=1.6mm,DØ=3.5mm, L 6mm M.27.03.D160L6
- steco inner sleeve dØ=2.0mm,DØ=3.5mm, L 6mm M.27.03.D200L6
- steco inner sleeve dØ=2.0mm,DØ=3.5mm, L 10mm M.27.03.D200
- steco inner sleeve dØ=2.2mm,DØ=3.5mm, L 6mm M.27.03.D220L6
- steco inner sleeve dØ=2.35mm,DØ=3.5mm, L 6mm M.27.03.D235L6
- steco inner sleeve dØ=2.35mm,DØ=3.5mm, L 10mm M.27.03.D235
- steco inner sleeve dØ=2.50mm,DØ=3.5mm, L 6mm M.27.03.D250L6
- steco inner sleeve dØ=2.80mm,DØ=3.5mm, L 6mm M.27.03.D280L6
- steco inner sleeve with depth stop dØ=1.16mm,DØ=3.5mm, L 5mm M.27.24.D116L5
- steco inner sleeve with depth stop dØ=1.30mm,DØ=3.5mm, L 5mm M.27.24.D130L5
- steco inner sleeve with depth stop dØ=2.0mm,DØ=3.5mm, L 5mm M.27.24.D200L5

Available lengths (5 or 6 mm) are shown in a list



Sleeve to implant distance is adjustable

- 4. ▶
- 5. ▶ 5.0
- 6. ▶ 5.1
- 7. ▶ 5.2
- 8. ▶ 5.3
- 9. ▶ 5.4
- 10. ▶ 5.5
- 11. ▶ 5.6
- 12. ▶ 5.7
- 13. ▶ 5.8
- 14. ▶ 5.9
- 15. ▶
- 16. ▶
- 17. ▶
- 18. ▶
- 19. ▶
- 20. ▶
- 21. ▶
- 22. ▶
- 23. ▶
- 24. ▶

Nobel Biocare NobelReplace Conical Connection	4.30	11.50		steco outer sleeve L6mm D4.0mm M.27.02.D350	Innen Ø 3.5	Aussen Ø 4.06	Länge 6	Abst
---	------	-------	---	---	-------------	---------------	---------	------

## Principle StecoGuide **inner sleeves without outer sleeve**

Plan position of inner sleeve in SMOP and fix it in the surgical template.

Use inner sleeve in the desired diameter for pilot drill.



Choose funnel type for easier access to sleeve

Choose type without funnel for depth stop planning

## Selection StecoGuide inner sleeves (for one drill diameter)

smop  
powered by swissmeda

Prozessschritte: Planung (Modell und gedruckte Schablone)

36 Nobel Biocare NobelReplace Conical Connection 4.30 11.50 steco Nobel Biocare RP, M.27.15.D500 Innen Ø Aussen Ø Länge Abstand

- Generic Sleeve
- Nobel Biocare Kit
- MGUIDE universal pilot drills kit Ø2.4 mm
- steco**
- Ulmer

Implantat Hülse Abutment Sich.-Zyl. Imp.-Achser

inner sleeves can be selected under:  
**Steco inner sleeve**

- steco single sleeve dØ=2.35mm,DØ=3.0mm, L 5mm M.27.01.D235L5
- steco single sleeve dØ=2.35mm,DØ=3.0mm, L 10mm M.27.01.D235
- steco outer sleeve L5mm D4.0mm M.27.02.D350L5
- steco outer sleeve L6mm D4.0mm M.27.02.D350
- steco Nobel Biocare NP, M.27.15.D410 d=4.1, D= 4.7 L = 3.5 SW = 4.2
- steco Nobel Biocare RP, M.27.15.D500 d=5.0, D= 6.0 L = 3.5 SW = 5.6
- steco Nobel Biocare WP, M.27.15.D620 d=6.20, D= 7.0 L = 3.5 SW = 6.6
- steco inner sleeve dØ=1.5mm,DØ=3.5mm, L 6mm M.27.03.D150L6
- steco inner sleeve dØ=1.6mm,DØ=3.5mm, L 6mm M.27.03.D160L6
- steco inner sleeve dØ=2.0mm,DØ=3.5mm, L 6mm M.27.03.D200L6**
- steco inner sleeve dØ=2.0mm,DØ=3.5mm, L 10mm M.27.03.D200
- steco inner sleeve dØ=2.2mm,DØ=3.5mm, L 6mm M.27.03.D220L6
- steco inner sleeve dØ=2.35mm,DØ=3.5mm, L 6mm M.27.03.D235L6
- steco inner sleeve dØ=2.35mm,DØ=3.5mm, L 10mm M.27.03.D235
- steco inner sleeve dØ=2.50mm,DØ=3.5mm, L 6mm M.27.03.D250L6
- steco inner sleeve dØ=2.80mm,DØ=3.5mm, L 6mm M.27.03.D280L6
- steco inner sleeve with depth stop dØ=1.16mm,DØ=3.5mm, L 5mm M.27.24.D116L5
- steco inner sleeve with depth stop dØ=1.30mm,DØ=3.5mm, L 5mm M.27.24.D130L5
- steco inner sleeve with depth stop dØ=2.0mm,DØ=3.5mm, L 5mm M.27.24.D200L5



## Selection StecoGuide inner sleeves (for one drill diameter)

Prozessschritte: Planung (Modell und gedruckte Schablone)

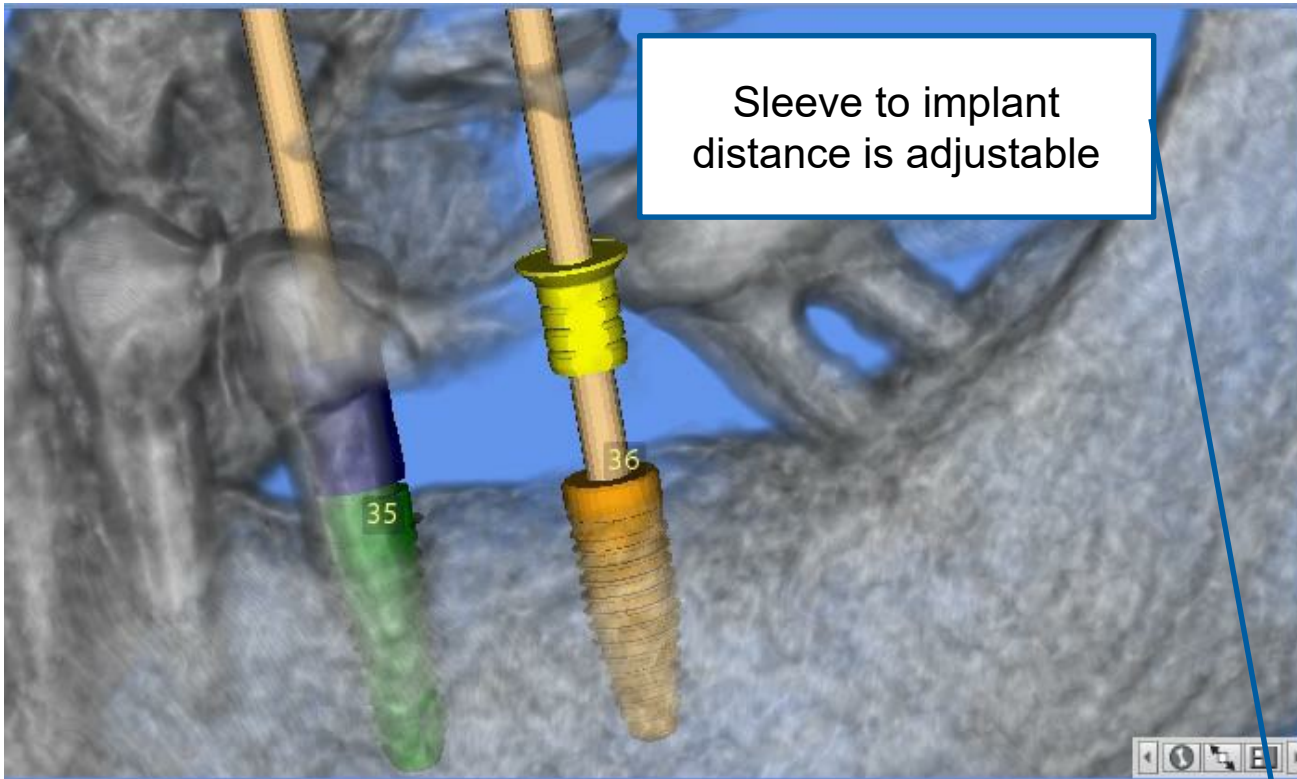
36 Nobel Biocare NobelReplace Conical Connection 4.30 11.50 steco Nobel Biocare RP, M.27.15.D500 Innen Ø Aussen Ø Länge Abstand d=5.0, D= 6.0 L = 3.5 SW

- Generic Sleeve
- Nobel Biocare Kit
- MGUIDE universal pilot drills kit Ø2,4 mm
- steco**
- Ulmer

inner sleeves can be selected under:  
**Steco inner sleeve with depth stop**


- steco single sleeve dØ=2.35mm,DØ=3.0mm, L 5mm M.27.01.D235L5
- steco single sleeve dØ=2.35mm,DØ=3.0mm, L 10mm M.27.01.D235
- steco outer sleeve L5mm D4.0mm M.27.02.D350L5
- steco outer sleeve L6mm D4.0mm M.27.02.D350
- steco Nobel Biocare NP, M.27.15.D410 d=4.1, D= 4.7 L = 3.5 SW = 4.2
- steco Nobel Biocare RP, M.27.15.D500 d=5.0, D= 6.0 L = 3.5 SW = 5.6
- steco Nobel Biocare WP, M.27.15.D620 d=6.20, D= 7.0 L = 3.5 SW = 6.6
- steco inner sleeve dØ=1.5mm,DØ=3.5mm, L 6mm M.27.03.D150L6
- steco inner sleeve dØ=1.6mm,DØ=3.5mm, L 6mm M.27.03.D160L6
- steco inner sleeve dØ=2.0mm,DØ=3.5mm, L 6mm M.27.03.D200L6
- steco inner sleeve dØ=2.0mm,DØ=3.5mm, L 10mm M.27.03.D200
- steco inner sleeve dØ=2.2mm,DØ=3.5mm, L 6mm M.27.03.D220L6
- steco inner sleeve dØ=2.35mm,DØ=3.5mm, L 6mm M.27.03.D235L6
- steco inner sleeve dØ=2.35mm,DØ=3.5mm, L 10mm M.27.03.D235
- steco inner sleeve dØ=2.50mm,DØ=3.5mm, L 6mm M.27.03.D250L6
- steco inner sleeve dØ=2.80mm,DØ=3.5mm, L 6mm M.27.03.D280L6
- steco inner sleeve with depth stop dØ=1.16mm,DØ=3.5mm, L 5mm M.27.24.D116L5
- steco inner sleeve with depth stop dØ=1.30mm,DØ=3.5mm, L 5mm M.27.24.D130L5
- steco inner sleeve with depth stop dØ=2.0mm,DØ=3.5mm, L 5mm M.27.24.D200L5**



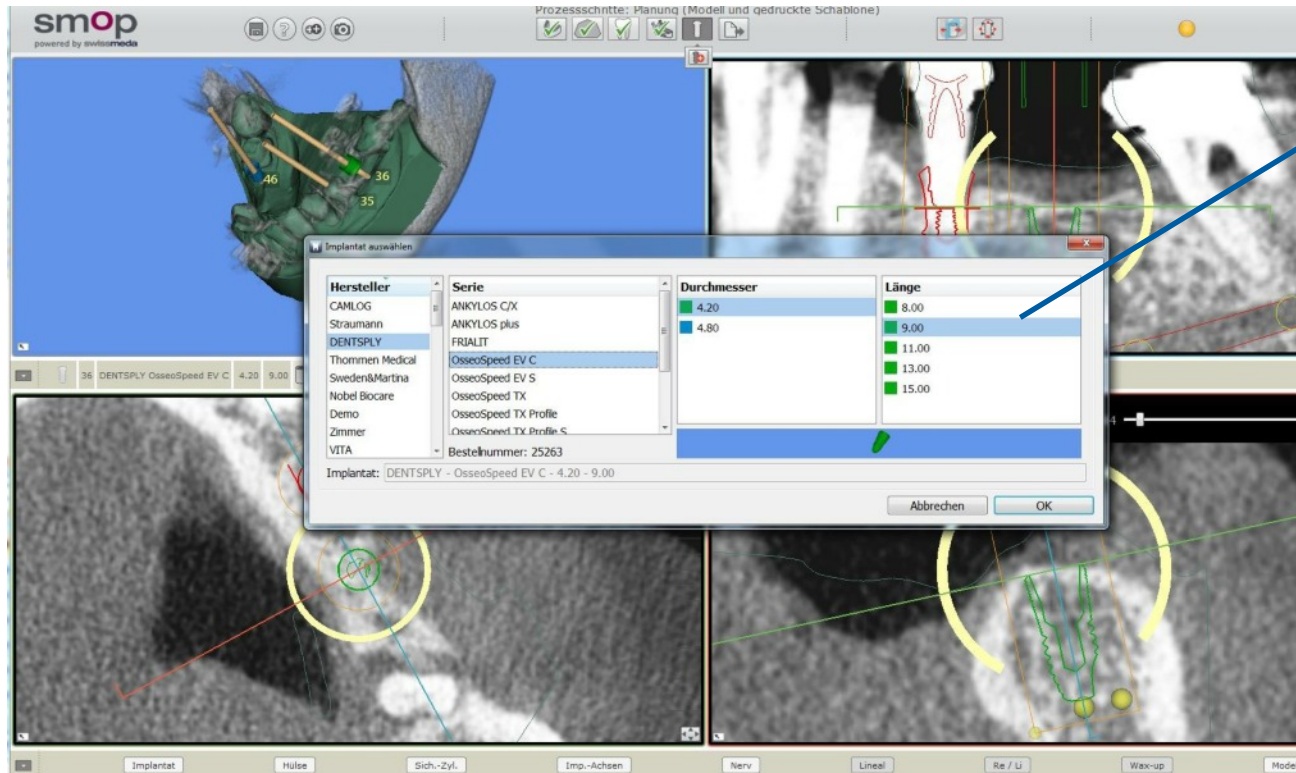


Sleeve to implant distance is adjustable

4.	▶	
5.	▶	5.0
6.	▶	5.1
7.	▶	5.2
8.	▶	5.3
9.	▶	5.4
10.	▶	5.5
11.	▶	5.6
12.	▶	5.7
13.	▶	5.8
14.	▶	5.9
15.	▶	
16.	▶	
17.	▶	
18.	▶	
19.	▶	
20.	▶	
21.	▶	
22.	▶	
23.	▶	
24.	▶	

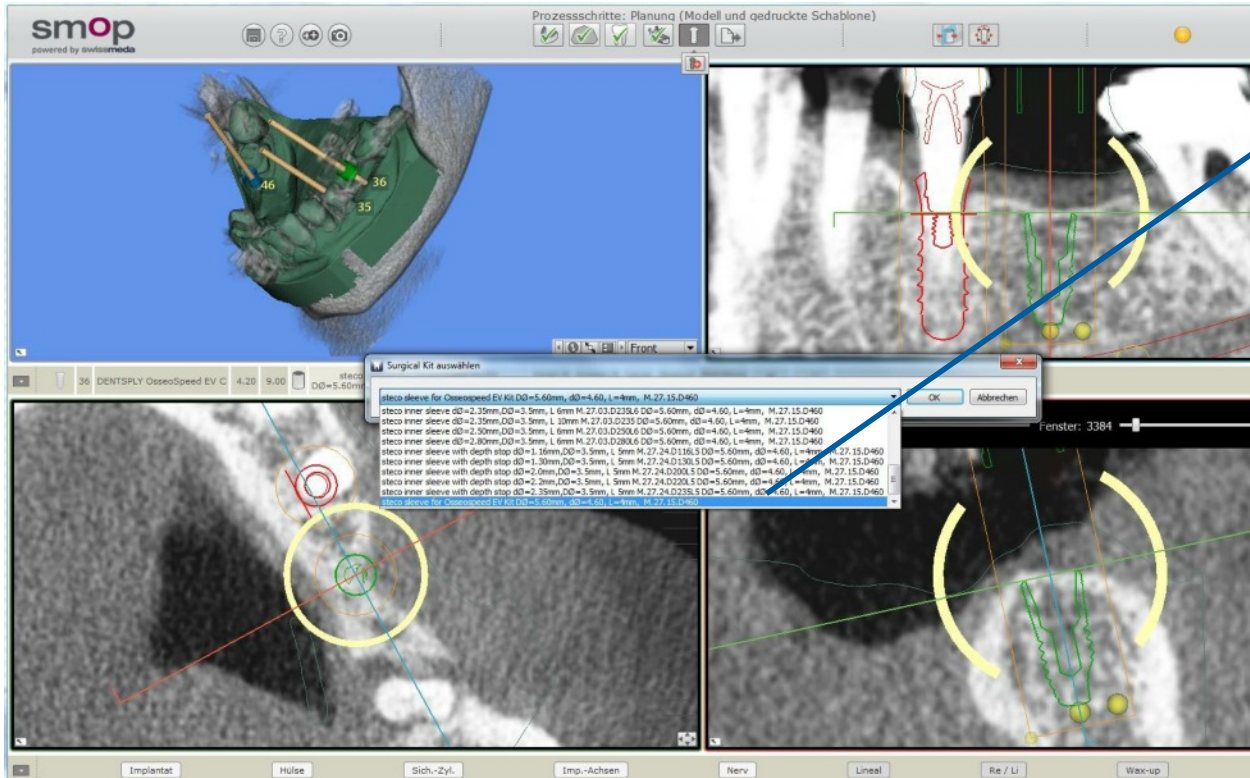
Biocare NobelReplace anical Connection	4.30	11.50		steco inner sleeve with depth stop dØ=2.0mm,DØ=3.5mm, L 5mm M.27.24.D200L5	Innen Ø 2	Aussen Ø 3.5	Länge 5	Abst 5
---	------	-------	---	---	--------------	-----------------	------------	-----------

## Selection StecoGuide guide sleeves (for fully guided kits)



Select implant type, size and lengths

## Selection StecoGuide guide sleeves (for fully guided kits)



Choose corresponding guide sleeve from steco library





## Selection StecoGuide guide sleeves (for fully guided kits)

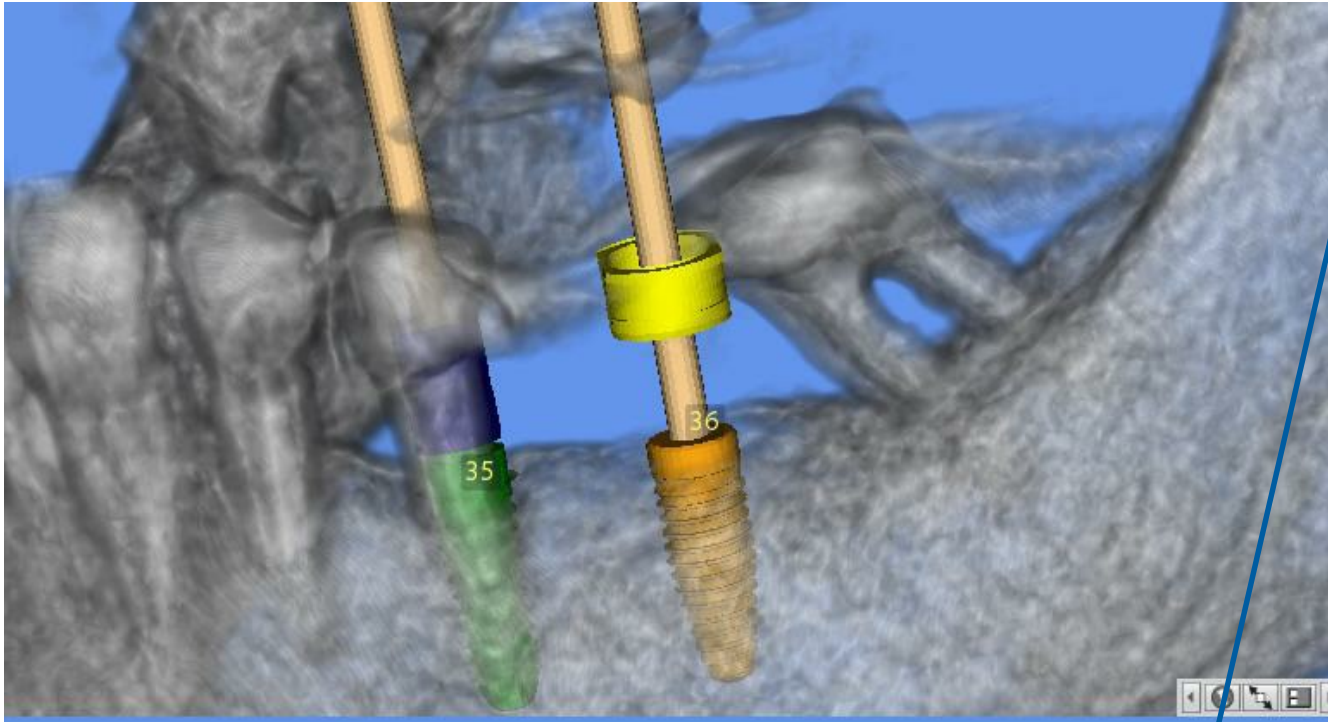
Choose corresponding guide sleeve from steco library

Prozessschritte: Planung (Modell und gedruckte Schablone)


steco single sleeve dØ=2.35mm, DØ=3.0mm, L=5mm M.27.01.D235L5  
 steco single sleeve dØ=2.35mm, DØ=3.0mm, L=10mm M.27.01.D235  
 steco outer sleeve L5mm D4.0mm M.27.02.D350L5  
 steco outer sleeve L6mm D4.0mm M.27.02.D350  
 steco Nobel Biocare NP, M.27.15.D410 d=4.1, D= 4.7 L = 3.5 SW = 4.2  
**steco Nobel Biocare RP, M.27.15.D500 d=5.0, D= 6.0 L = 3.5 SW = 5.6**  
 steco Nobel Biocare WP, M.27.15.D620 d=6.20, D= 7.0 L = 3.5 SW = 6.6  
 steco inner sleeve dØ=1.5mm, DØ=3.5mm, L=6mm M.27.03.D150L6  
 steco inner sleeve dØ=1.6mm, DØ=3.5mm, L=6mm M.27.03.D160L6  
 steco inner sleeve dØ=2.0mm, DØ=3.5mm, L=6mm M.27.03.D200L6  
 steco inner sleeve dØ=2.0mm, DØ=3.5mm, L=10mm M.27.03.D200  
 steco inner sleeve dØ=2.2mm, DØ=3.5mm, L=6mm M.27.03.D220L6  
 steco inner sleeve dØ=2.35mm, DØ=3.5mm, L=6mm M.27.03.D235L6  
 steco inner sleeve dØ=2.35mm, DØ=3.5mm, L=10mm M.27.03.D235  
 steco inner sleeve dØ=2.50mm, DØ=3.5mm, L=6mm M.27.03.D250L6  
 steco inner sleeve dØ=2.80mm, DØ=3.5mm, L=6mm M.27.03.D280L6  
 steco inner sleeve with depth stop dØ=1.16mm, DØ=3.5mm, L=5mm M.27.24.D116L5  
 steco inner sleeve with depth stop dØ=1.30mm, DØ=3.5mm, L=5mm M.27.24.D130L5  
 steco inner sleeve with depth stop dØ=2.0mm, DØ=3.5mm, L=5mm M.27.24.D200L5  
 steco inner sleeve with depth stop dØ=2.37mm, DØ=3.5mm, L=5mm M.27.24.D237L5



## Selection StecoGuide guide sleeves (for fully guided kits)



Distance will be set acc. to drill lengths

36	Nobel Biocare NobelReplace Conical Connection	4.30	11.50		steco Nobel Biocare RP, M.27.15.D500	Innen Ø	Aussen Ø	Länge	Abstand	Bohrl
					d=5.0, D= 6.0 L = 3.5 SW = 5.6	5	6	3.5	5.5	20



[info@dentalsil.nl](mailto:info@dentalsil.nl)



+31 (0)495 651 214



+31 (0)495 652 474



Find us on Facebook

# www.dentalsil.com